



Pressure gauges - Art. mge - stainless steel case (glycerine) - BOTTOM Dial 40 -  
50 - 63 - 80 mm

MGE.R



## Use

Pressure gauges suitable for all process gaseous and liquid that don't attack copper alloy parts. Intended for adverse service conditions where pulsating or vibration exists. Hydraulics, Compressors

## Description

Pressure gauge made according UNI EN 837.1 norms

- Stainless steel case aisi 304 dial - Dial 40 - 50 - 63 mm. protection degree IP65
- BRASS Spring, movement and pivot
- BOTTOM execution
- conical (UNI EN 10226) connection on dial 40 - cilindric (ISO 228) connection on dial 50 and 63
- Aluminium index, Aluminium dial White background
- Black BAR scale and Red PSI (except compound gauge)
- Accuracy 2,5% on dial 40 and 50 - Accuracy 1,6% on dial 63

## Using range

Working Temperature: -10 +60° C (+14 +140° F)

Working Pressure: Steady 75% - Variable 60%

Overpressure: 25% < 60 bar >15% (according EN837.1)

## Models

Normalized range: Vacuum -1 / 0 Bar+CmHg;

Compound -1+0,6; -1+1,5; -1+3; -1+5; -1+9; -1+15 BAR only;

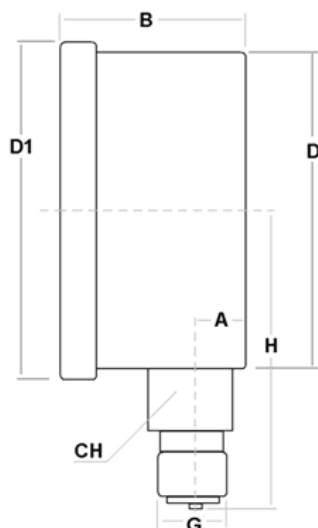
0,6; 1; 1,6; 2,5; 4; 6; 10; 12; 16; 25; 40; 60; 100; 160; 250; 315; 400; 600; 1000 Bar + Psi

## Options

NPT ANSI B.1.20.1 thread, With or without Glycerin, OXYGEN SERVICE, customize range, scale or logo; Coloured sector; Bottom connection @ 3 / 9 / 12 hours; refrigerants range with UNF connection



## Available sizes



VAR	A	B	D	D1	H	G	CH	Kg	Lotto
dn 40	0,5	25	40,5	44	38	1/8" BSPT	11	0,110	100
dn 50	10	30	52	57	49	1/4" BSPP	14	0,145	100
dn 63	10	30	62	68	57	1/4" BSPP	14	0,207	50
dn 80	10	30	80	87	72	3/8" BSPP	17	0,290	50

*Picture, dimensions and features could change at any time*



Pressure gauges - Art. mge - stainless steel case (glycerine) - BACK Dial 40 - 50 - 63 - 80 mm

MGE.P



## Use

Pressure gauges suitable for all process gaseous and liquid that don't attack copper alloy parts. Intended for adverse service conditions where pulsating or vibration exists. Hydraulics, Compressors

## Description

Pressure gauge made according UNI EN 837.1 norms

- Stainless steel case aisi 304 dial - Dial 40 - 50 - 63 mm. protection degree IP65
- BRASS Spring, movement and pivot
- BACK execution
- conical (UNI EN 10226) connection on dial 40 - cylindrical (ISO 228) connection on dial 50 and 63
- Aluminium index, Aluminium dial White background
- Black BAR scale and Red PSI (except compound gauge)
- Accuracy 2,5% on dial 40 and 50 - Accuracy 1,6% on dial 63

## Using range

Working Temperature: -10 +60° C (+14 +140° F)

Working Pressure: Steady 75% - Variable 60% - Overpressure: 25% < 60 bar >15% (according EN837.1)

## Models

Normalized range: Vacuum -1 / 0 Bar+CmHg;

Compound -1+0,6; -1+1,5; -1+3; -1+5; -1+9; -1+15 BAR only;

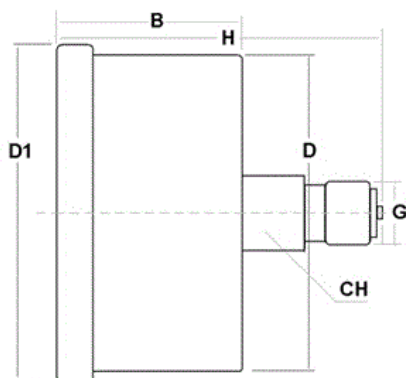
0,6; 1; 1,6; 2,5; 4; 6; 10; 12; 16; 25; 40; 60; 100; 160; 250; 315; 400; 600; 1000 Bar + Psi

## Options

NPT ANSI B.1.20.1 thread, With or without Glycerin, OXYGEN SERVICE, customize range, scale or logo; Coloured sector; refrigerants range with UNF connection



## Available sizes



VAR	B	D	D1	H	G	CH	Kg	Lotto
dn 40	25	40,5	44	43	1/8" BSPT	11	0,110	100
dn 50	28	51,7	56	50	1/4" BSPP	14	0,145	100
dn 63	29	62	68	53	1/4" BSPP	14	0,188	50
dn 80	33	80	87	66	3/8" BSPP	17	0,275	50

*Picture, dimensions and features could change at any time*